



# First Andes Silver Ltd.

## Flagship Project

- Santas Gloria Silver Project located 100 kms from Lima, Peru with excellent roads. Maiden diamond drill program reported silver grades on all drilled vein systems confirming silver endowment.

## Significant Silver Assays:

- 7.43m at 224 g/t AgEq (193 g/t Ag, 0.34% Pb, 0.3% Zn, 0.05 g/t Au) from 86.70m including 0.95m at 754 g/t AgEq (701 g/t Ag, 1.07% Pb, 0.62% Zn, 0.08 g/t Au) and 1.23m at 387 g/t AgEq (356 g/t Ag, 0.34% Pb, 0.39% Zn, 0.12 g/t Au) (San Jorge vein system)
- 3.10m at 155 g/t AgEq (138 g/t Ag, 0.18% Pb, 0.17% Zn, 0.08 g/t Au) from 47.30m (San Jorge vein system)
- 6.40m at 108 g/t AgEq (70 g/t Ag, 0.40% Pb, 0.78% Zn, 0.05 g/t Au) from 138.8m including 2.26m at 162m AgEq (103 g/t Ag, 0.59% Pb, 1.34% Zn, 0.03 g/t Au) (San Jorge vein system)
- 4.40m at 134 g/t AgEq (80 g/t Ag, 0.16% Pb, 0.34% Zn, 0.44 g/t Au) from 42.70m (Maribel vein system)
- 3.30m at 110 g/t AgEq (65 g/t Ag, 0.15% Pb, 0.43% Zn, 0.31 g/t Au) from 35.40m including 0.48 m at 391 g/t AgEq (310 g/t Ag, 0.02% Pb, 0.02% Zn, 0.89 g/t Au) (Paquita vein system)
- 0.87m at 131 g/t AgEq (72.4 g/t Ag, 0.71% Pb, 1.19% Zn, 0.05 g/t Au) from 115.30m including 0.42m at 224.3 g/t AgEq (127 g/t Ag, 1.25% Pb, 2.0% Zn, 0.04 g/t Au)

## Focusing new drilling on the high grade Sulphide Zone

- Focusing on sulphide zone drill targets to follow up on the the 754 g/t AgEq intersected at 86.7 meters.

## Ultra High Grade

- Up to >10,000 g/t Ag, > 20% Pb, 9.1% Zn and 1.27 g/t Au in underground channel samples.
- Up to 2500 g/t Ag and 56 g/t Au in surface channel samples.

## Fully Permitted and Drill Ready

- Fully permitted and drill ready with 10 drill pads already constructed on high priority silver targets.
- Three archeological certificates clearing key drill targets of any archeological impediments and signed community access agreement in place until 2028.

## Extensive Mineralization

- Over 12 kilometers of multiphase veins from 1 to 5 meters wide. Limited historical underground mining confirms high grade sulphide vein mineralization at depth.
- Strong hydrothermal system indicated from surface outcrops that show brecciated and multiphase veins with abundant iron oxides after sulfides.

## Small Market Cap

- Very small market capitalization (sub \$2MM) with 33,242,372 shares outstanding and no share purchase warrants.

## Results Focused Drilling

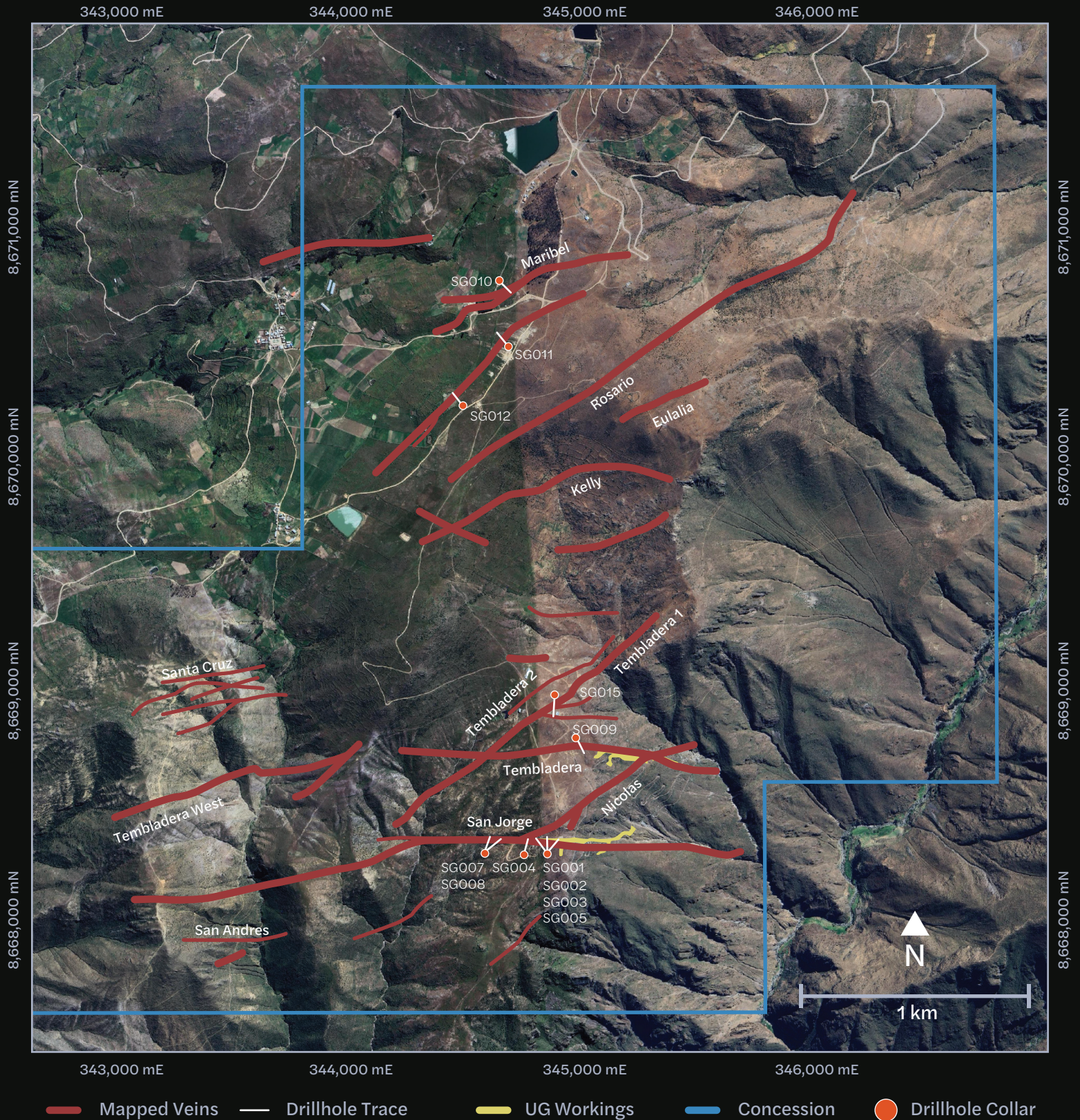
- Experienced Geological team led by Colin Smith P.Geo, CEO and Chief Consulting Geologist Dr. Chris Wilson as Q.P. James Hutton, Corporate finance advisory.



## Potential Milling Opportunity

- There are a number of mines operating in the Morococha camp with excess mill capacity for high grade silver-base metal feed that are within 40 to 50 km of Santas Gloria. At least one private Peruvian miner also has capacity to provide underground miners and equipment, drastically reducing timeline and CAPEX requirements to cash flow.

Figure 1: Map of the Santos Gloria Property showing planned drill pads, hole traces and channel sampling results.



For additional information contact James Hutton

604-328-7515 • [jhutton17@gmail.com](mailto:jhutton17@gmail.com)